



GIANT SPIDERS



SPIDERS, ONLY HUGE. In fact one called the Great One, as the not very original name suggests, was *enormously* huge. The spiders lived on Metebelis 3, and were enlarged and mutated by the powers of the strange blue crystals there. But then the spiders managed to find a way to Earth . . .

Legs. Eight of them. Obviously.

Devours humans for lunch.

Also shoots deadly energy.

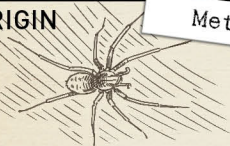
SURVIVAL TIPS

I'm assuming you'd notice a big spider scuttling about or waiting for you in the bath. Keep well back as they can jump. If one lands on you, it can clamp on to your back and control your mind.



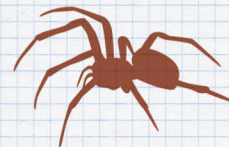
MONSTER DATA

ORIGIN

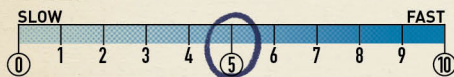


Metebelis 3

SIZE



SPEED



DANGEROUS RATING

